



14 Day Bangkok & Pattaya Golf Experience



Day 1: Arrival in Bangkok and transfer to the hotel

Day 2: Golf at [**Royal Gems Golf City – Dream Arena**](#) including golf cart and caddie – Bangkok’s first replica course, with the front 9 famous holes from around the globe, and the back 9 a replica of the back 9 at Augusta National

Day 3: Full day Bangkok Highlights Tour with Lunch (Further details below)

Day 4: Golf at [**Nikanti Golf Club**](#) including golf cart and caddie – Unique 6 par 3, 6 par 4, 6 par 5 layout in excellent shape. Enjoy local tastes as part of a buffet meal before & after golf

Day 5: Transfer to Pattaya

Day 6: Golf at [**Siam Country Club – Rolling Hills Course**](#) including golf cart and caddie – Siam Country Club’s newest Pattaya course. Unique to other courses in Thailand, it plays as a links style course.

Day 7: Golf at [**Laem Chabang International Country Club**](#) including golf cart and caddie – Jack Nicklaus’ best design in Thailand. Well liked and very challenging

Day 8: Free day, at your leisure

Day 9: Golf at [**Siam Country Club – Plantation Course**](#) including golf cart and caddie – Prior host of the Honda LPGA Thailand. Carved out of an old Pineapple plantation, rated as one of Pattaya’s Best

Day 10: Full day Pattaya Cultural Tour with Lunch (Further details below)

Day 11: Golf at [**Chee Chan Golf Resort**](#) including golf cart and caddie – Golf in the shadow of Chee Chan Mountain. This course is 3 years old and is long, with many holes into the wind. Top quality conditioning sets it apart.

Day 12: Free day, at your leisure

Day 13: Golf at [**Siam Country Club – Old Course**](#) including golf cart and caddie – Home of the Honda LPGA Thailand and the crown jewel in the Siam Country Club stable

Day 14: Transfer to the airport for departure

PACKAGE INCLUDES:

- 4 Nights’ accommodation in Bangkok with daily Breakfast
- 9 Nights’ accommodation in Pattaya with daily Breakfast
- 2 rounds of golf in Bangkok including cart and caddie as mentioned in the itinerary
- 5 rounds of golf in Pattaya including cart and caddie as mentioned in the itinerary
- Privately guided excursions as mentioned in the itinerary
- All airport, land & golf course transfers in VIP minivans complete with daily drinking water
- Meet & Greet upon arrival in Bangkok
- All taxes and service charges
- 24/7 golf hotline

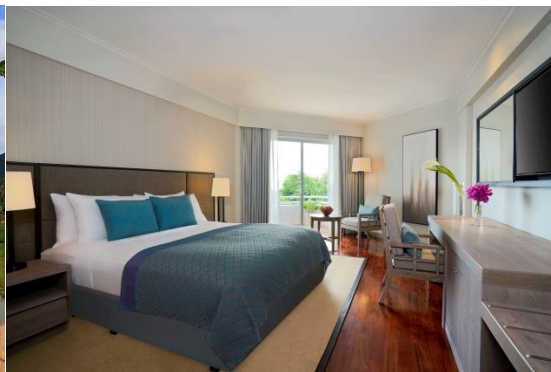
PACKAGE EXCLUDES:

- Gratuities
- Meals with the exception of daily breakfast
- Airfares
- COVID Tests
- Test & Go Supplements

PACKAGE PRICING:

Hotel Options	Twin share, Per Person	Single Occupancy, Per Person
5* Sofitel Bangkok Sukhumvit (Luxury Room) 5* AVANI Pattaya Resort (Garden View Room)	68,000 THB	95,000 THB

Based on 4 golfers traveling together
Rates are “From Rates” – depending on dates traveled, number of golfers, hotel and courses chosen



Tours:

Bangkok:

Take on Bangkok's finest attractions and journey around the city's fascinating canal network. Start at the magnificent Grand Palace to take in the beauty of this sprawling temple complex boasting some of the finest Thai-Buddhist architecture in the entire country. Explore the vast grounds and numerous dazzling buildings, including the highly revered Wat Phra Kaew, home to the prized Emerald Buddha statue dating back to the 14th Century. Afterwards, head across the road to Wat Pho, one of the largest and oldest temples in Bangkok home to more than 1,000 Buddha images. The temple is considered as the first public university in the Kingdom and the birthplace of traditional Thai massage housing one of the oldest massage schools in the country. After grabbing lunch at a local restaurant, in the afternoon a visit to Museum Siam reveals several exhibits displaying the national identity and history of Thai people and their relationships with neighbouring cultures. The concept of the museum is 'Play + Learn = Joyously', achieved through a series of interactive exhibits. Next, hop on a traditional longtail boat to meander through the quaint canals taking in the quieter side of Bangkok life, which would not be complete without an exploration of the spectacular and iconic Wat Arun. Take time to explore the iconic temple towering 79 metres over the Chao Phraya River offering panorama across Bangkok from the Thonburi side.

Pattaya:

Pattaya is the major city on Thailand's eastern seaboard. Start at The Sanctuary of Truth. Often considered a temple, this structure is a mixture of architectures from ancient religions from across the years. The structure is made entirely of wood, and is now considered a museum. The structure overlooks Pattaya and offers fantastic views across the bay. From here, head down to Chee Chan Mountain. This majestic limestone mountain has a large image of Buddha engraved in one side of the mountain. There is a temple at the foot of the mountain where visitors can go pay respects to Buddha. From here, head to the Pattaya floating market to experience tastes from all corners of Thailand, while having food cooked on and delivered from traditional Thai boats. After tantalizing your taste buds, we will take you to Wat Yan, which houses precious Buddhist relics and offers a chance to pray with the monks. End the day shopping at the vibrant Thepprasit Night Market to see some authentic and traditional Thai souvenirs.